

# Stand alone gel documentation



New break through stand alone gel documentation system is a research grade low cost maintenance free system in the market, applicable wide range accessories for molecular biology application.

KETA S is a research grade cost effective gel documentation system ideally for routine and large throughput molecular biology laboratory. This unit equipped with 16bit B/W 5.0M Pixels camera, manual adjust lens, superior performance and convenient user interface, small footprint darkroom, 10.1" touch LCD display, in-build SBC, MS windows OS7, USB2.0/USB3.0 port, multiple languages, UV radiation safety interlock, 24V power supply in build as standard for BW-20 blue and white light transilluminator.

Dual U7 LED Epi-White light, 302nm UV transilluminator for SDS-PAGE and agarose gel stained by EtBr, SYBR Green, SYPRO Orange, SYBR Gold, Coomassie Brilliant Blue, and silver stain by changing emission filter, optional 165x55 mm observation window with front view adapter for real time electrophoresis check and gel excision.

Auto-exposure as standard, snap shot can set from micro-second, mini-second to seconds for one shot, programming capture with up to 10 steps exposure time over than 1 hour, pause at anytime during chemiluminescent detection. Band Tool software package included to perform image rotate, deconvolution / sharpen, interpolate, background subtraction, and Super Resolution. System built-in image contrast, brightness, gamma value, computerized-coloring, color conversion, and etc. Captured image information includes file name, camera information, captured mode, exposure time, and captured time are all saved automatically.



Light source switch and safety switch



10.1" touch screen control panel

## Applications

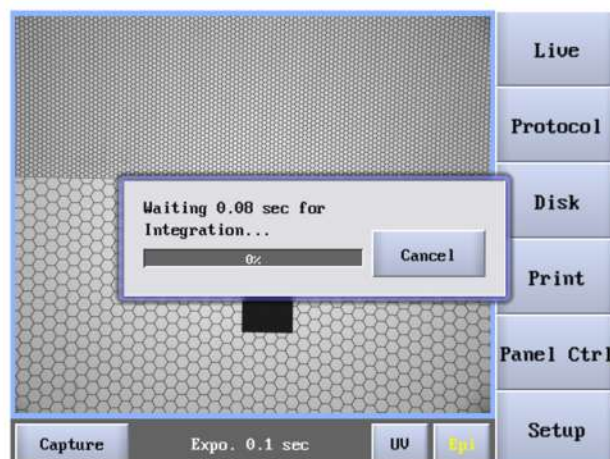
- Education, university, academic and research institute
- Analytical chemistry, molecular laboratory
- Food industrial and inspection laboratory
- Drug discovery, Biotechnology company
- Proteomics, genomics core facility
- Enzyme reaction, immunology



Multilingual Interface

## Features

- Powerful Dolphin 1D software upgradeable
- High sensitivity low cost in the market
- Flexible upgrade for all application
- No service and operation training
- Gel excision side hole option
- Multiple language support
- Applicable to support stain-free gel image



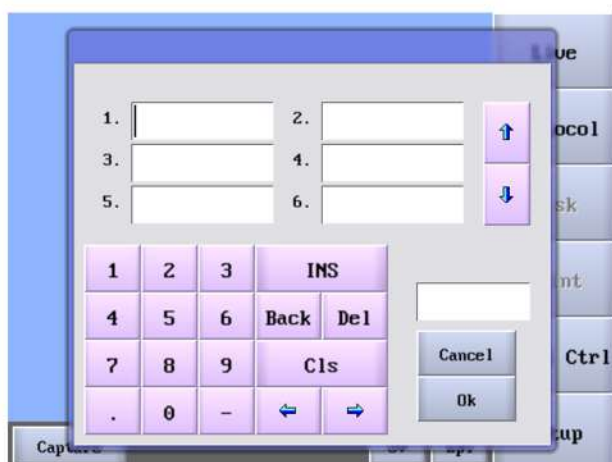
Auto Exposure



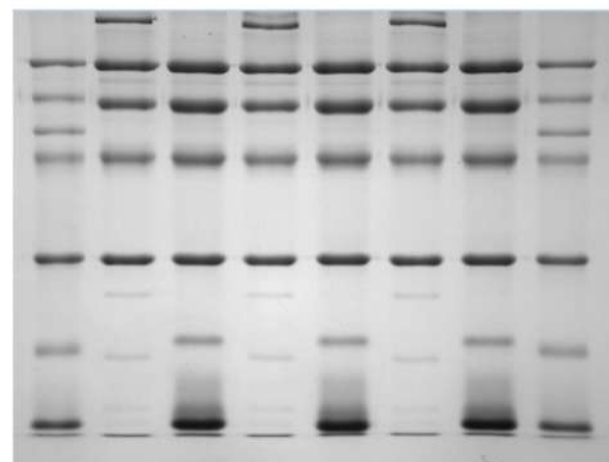
Manual Exposure



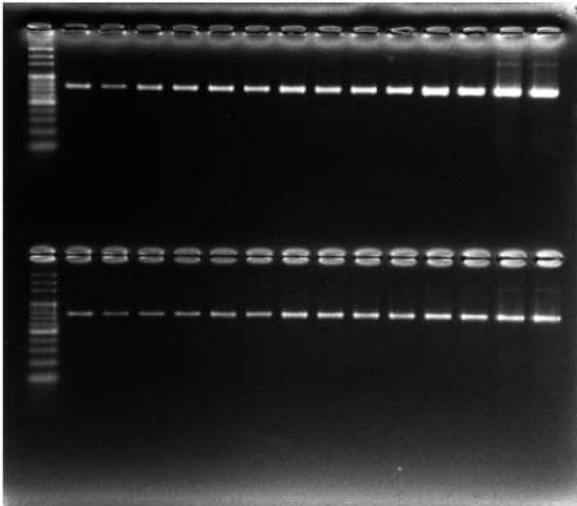
Capture Interface



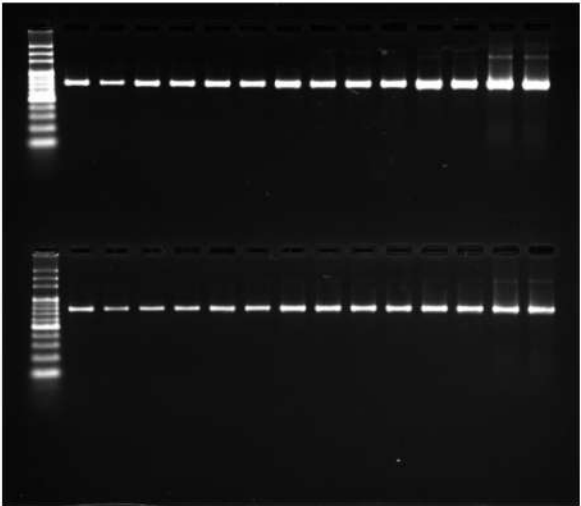
Programable exposure time setting



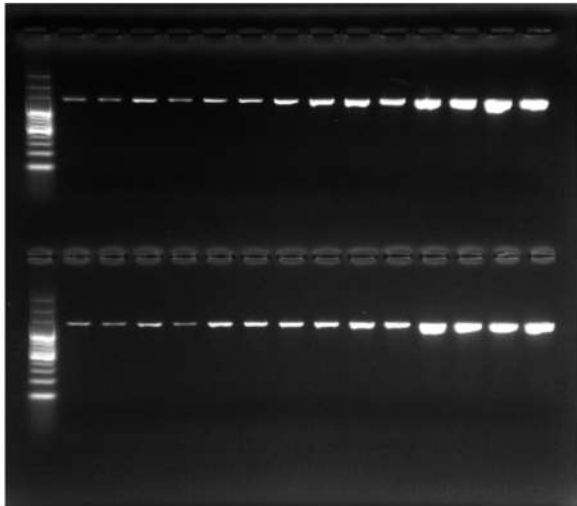
CBB stained SDS-PAGE observed through BW-20



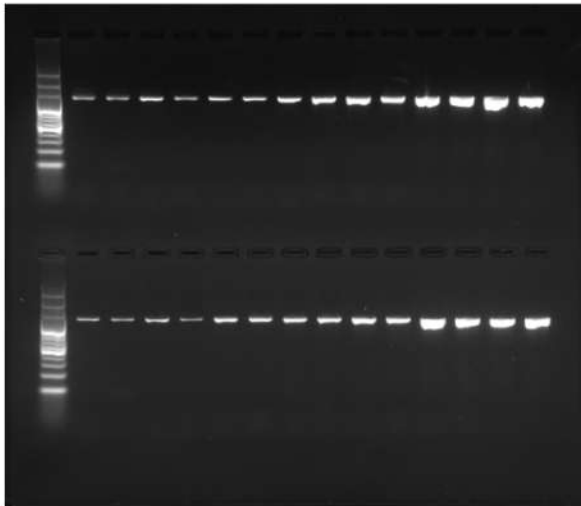
SYBR Green I stained agarose gel by BW-20



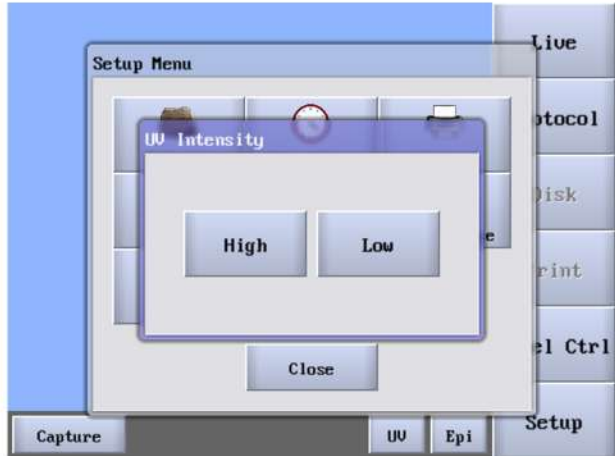
SYBR Green I stained agarose gel by UV transilluminator



SYBR Gold stained agarose gel by BW-20



SYBR Gold stained agarose gel by UV transilluminator



UV Intensity Selection



Gel UV Activation



## Specification

CCD Camera depth	B/W 16 bit
Chip size	2/3"
Cooling	Air, R-T
Resolution	5.0M Pixels
Operating Temperature	0 - 60°C
Lens	f1.4, 11.5 - 69 mm (6X) manual adjustment
Visual area	29x22 cm / 26.5x21 cm
Filter	Close-up 2X & H-T Amber filter
Communication	USB 2.0 x 4, USB 3.0 x 1, Wi-Fi, Ethernet
Epi-Illumination	Over head dual White Light LED
UV Transilluminator	302nm, 6 x 8 Watt tubes, 25 x 25cm as standard
Control & display	10.1" 16:10 visual angle adjustable touch screen
Image file format	JPG, BMP, JPEG, DFN, TIFF, PCX, GIF, TGA
Image storage	USB memory stick / SSD 8G standard
Physical dimensions	430 x 450 x 550 mm, W x D x H
Power	100-240V, 50-60Hz

The spec is subject to change without prior notice.

## Ordering Information

Catalog No.	Description
1147026	KETA S Image includes 5.0M pixels R-T camera, manual adjust lens, dual LED Epi-White light, in-build SBC, 302nm MD-25K UV transilluminator, 10.1" touch LCD, Band Tool software, 100-240V, 50 - 60Hz
<b>Option</b>	
1144012	Dolphin 1D instead of standard Band Tool software
1146001	UV / White light converter plate
1146002	UV radiation block cover for gel excision
1146003	Digital thermal printer
1146021	BW-20 B&W light transilluminator, 20 x 20cm with power adaptor and orange cover, 100-240V, 50-60Hz
1155006	MC 100-1 GBW / 365nm UV LED light source in lieu of MC 100, factory install
1155007	MC 100 RGB / white light LED light source in lieu of U7 Epi LED, factory install
8100027	High transparent amber filter 49mm ID
8106041	HD-25K 365nm UV transilluminator, 100-240V, 50-60Hz 25 x 25cm filter size in lieu of standard MD-25K, factory install
8106042	MD-25KD 302/365nm UV transilluminator, 100-240V, 50-60Hz, 25 x 25cm filter size in lieu of standard MD-25K, factory install
8106211	Wi-Fi module, factory install
8106221	Gel excision side hole, factory install
8106222	Three position filter changer, factory install



Wealtec Bioscience Co., Ltd.  
27F., No.29-1, Sec. 2, Zhongzheng E. Rd., Danshui Dist.,  
New Taipei City 25170, Taiwan  
Tel: +886-2-8809-8587 Fax: +886-2-8809-8589

E-Mail:sales@wealtec.com Web-site:http://www.wealtec.com

No.1208KES01©2024Wealtec Corp

