

Spectrophotometer



Features

- Single drop analysis mode for 0.7 ~ 5 μ sample volume
- High intensity Xenon flash lamp covers 200 to 800 nm
- Dedicated software for specific bio application functionality, DNA/RNA, Protein, OD 600, Kinetics
- Optical resolution less than 3 nm
- Direct dialogue operation interface no additional training necessary

Applications

- Drug discovery, Biotechnology company
- Education, university, academic and research institute
- Analytical chemistry, molecular laboratory
- Enzyme reaction, immunology
- Proteomics, genomics core facility
- Food industrial and inspection laboratory
- Water testing and colorimetric analysis
- Fluorescent nucleotide probe labeling density determination

SpectroArt 252 S

A single drop bench top Bio-Spectrophotometer is dedicated for DNA/RNA and Protein measurement, OD600 bacterial growth quantification, and enzyme kinetic analysis functions. Each analysis category with auto conversion function provides operator to change and readout data in desirable Abs, T%, 260/280 ratio, or concentration include Bradford @ 595 nm, Lowry @ 750nm, and BCA @ 562 nm standard curve programs. All data, spectrums, date, and mean values can be printed out by touching the screen. Flash Xenon lamp, 10 mm cuvette holder and high resolution linear CCD are the core technology of SpectroArt 252 S and SpectroArt 252 spectrophotometer. The compact optical module calibrates the wavelength accuracy by Holmium Oxide for longest stability. The Hellma® TrayCell is included in SpectroArt 252S to support 0.7 ~ 5 µl sample volume, DNA concentration ranging from 25 to 4,250 ng/µl can be detected by single drop. Standard cuvette, semi-micro, micro, disposable cuvettes also can be adaptable for general applications.

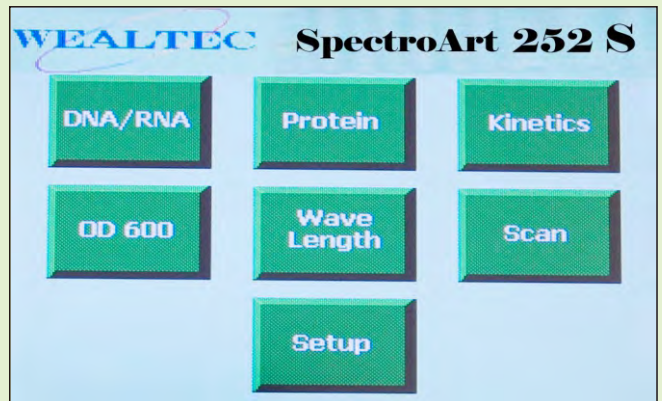
Single drop analysis mode

Available with 0.2/1.0 mm light path provides simple and easy operation capability. Pre-set program requests no necessary to do any parameter setting.



Control and display

5.7 inches large size energy-saved TFT LCD with touch screen, direct dialogue operation for function selectable, calibration curve and spectrum display, parameter setting, and printer control.

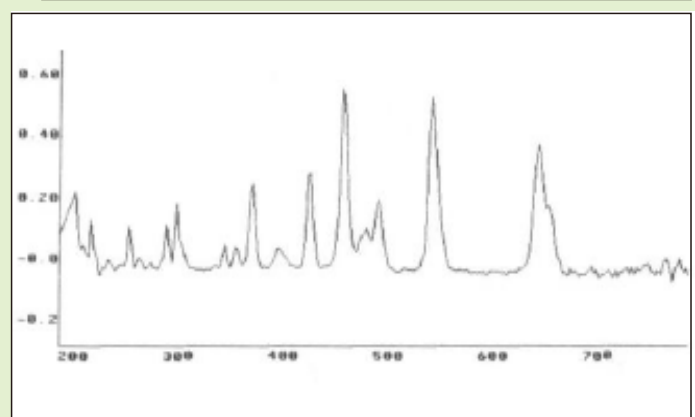
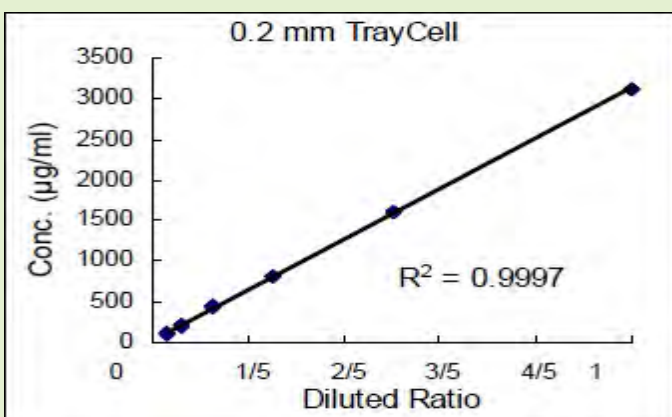


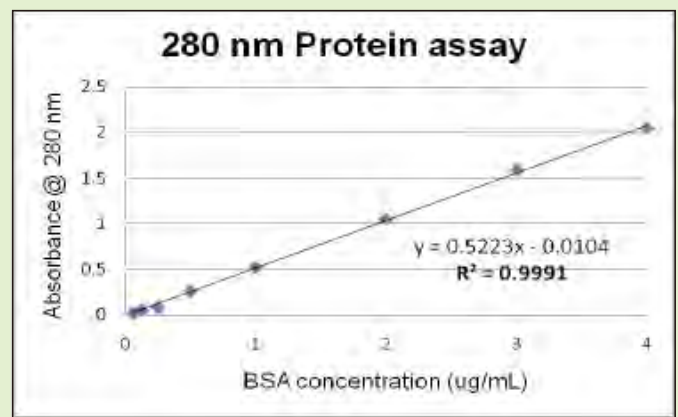
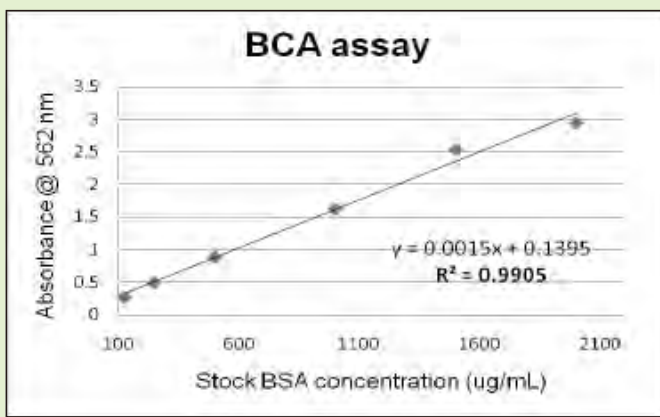
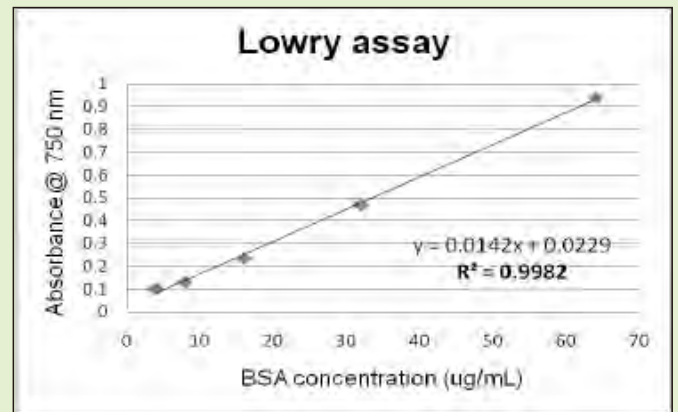
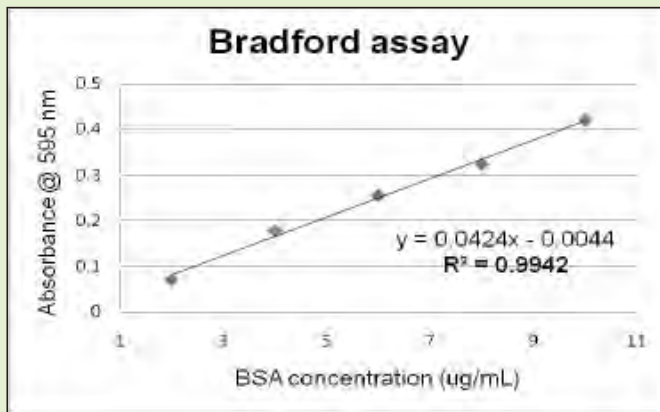
Printer

56.8 mm width built-in thermal printer, direct print out complete data such as: sample ID, Date, Spectrum, Abs, T%, Concentration, Mean value, and Peak wavelength.



Applications





Ordering Information

Catalog No.	Description
1210001	SpectroArt 252 Bio-spectrophotometer system, 100~240 V, 50~60 Hz.
1210011	SpectroArt 252S Bio-spectrophotometer system with TrayCell* for single drop analysis capability, 100~240 V, 50~60 Hz.
Accessories	
1211001	Standard cuvette, 3.5 ml 10 mm lightpath, quartz, black wall, 2pcs
1211002	Semi-micro cuvette, 1.4 ml 10 mm lightpath, quartz, black wall, 2pcs
1211003	Micro cuvette, 700 ul, 10 mm lightpath, quartz, black wall, 2pcs
1211004	Micro cuvette, 100 ul, 10 mm lightpath, quartz, black wall, 1pc
1211005	Single Drop Fiber-Optic Ultra-Micro Cell 3 ~ 5 ul, light path 1.0 mm, 1pc (TrayCell)
1211006	Disposable cuvette, 2.5 ml, 100 pcs/pk
1211014	Liquid Holmium Oxide wavelength reference standard
1212001	Thermal printer paper, 5 roll/pk

*TrayCell is a trademark and Hellma® is a registered trademark of Hellma GmbH & Co. KG.

Specifications

Light source	Flash Xenon Lamp
Detector	2048-elements linear silicon CCD array
Display	5.7" Touch screen TFT LCD
Wavelength range (nm)	200 – 800
Wavelength accuracy (nm)	± 1.5 from 200 – 800
Abs/Photometric accuracy (nm)	± 0.01 @ 1 & 0.5 AU
Abs/Photometric repeatability (nm)	± 0.01 @ 1 AU; ± 0.004 @ 0.5 AU
Stray light (nm)	< 0.05% @ 600 nm; < 0.1% @ 435 nm
Photometric noise	0.003 @ 0AU, 550nm
Spectral bandwidth (nm)	< 3
Absorbance range (AU)	0 – 3.5
Data collection speed (ms)	10 to 200 (Default: 50 ms)
Light path (mm)	10
Z-dimension (mm)	8.5
Multiple wavelength	9 Max.
Sample test repetition	10 Max.
Analytic data storage	99 Max.
Single beam	Yes
Applicable cuvette types	Standard / Semi-micro / Micro-volume
Printer	Built-in
Physical dimensions (mm)	320 x 255 x 130 (W x D x H)
Weight (kg)	4.5
Power Input	100-240VAC, 50-60Hz Max. 50W
Operating environment	0 to 400 °C; 10% to 90% R.H. Non-condensing
Altitude	Up to 2,000m
Pollution degree	II
Installation / over voltage category	II
Replaceable fuse type	F3.15AL/AC 250V
Replaceable lithium type battery	CR 2032, 3V, 3mA, 3.2 X 20mm
Certification	CE

The spec is subject to change without prior notice.



Wealtec Corp.
1885 Meadowvale Way,
Sparks, NV 89431, USA
Tel: +1-775-351-2066 Fax: +1-775-351-2077

E-Mail: sales@wealtec.com Web-site: <http://www.wealtec.com>

Wealtec Bioscience Co., Ltd.
27F., No.29-1, Sec. 2, Zhongzheng E. Rd., Danshui Dist.,
New Taipei City 251, Taiwan
Tel: +886-2-8809-8587 Fax: +886-2-8809-8589

No. 0911SA252S01©2011Wealtec Corp.

