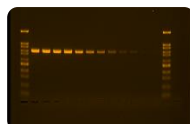




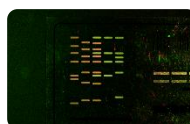
ALL IN ONE SYSTEM

Software-controlled multi-purpose imaging system for versatile applications



SAMPLE TRAY AUTOMATIC IDENTIFICATION

Detect Sample Tray automatically with preset protocols provide the best image capture condition



SUPERIOR SENSITIVITY

Reduce the waiting time for your faint signal to appear



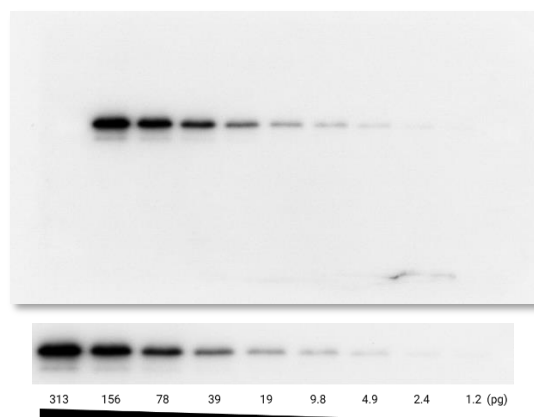
EASY IMAGE EXPORT

Export your images in a batch to your USB drive instantly

KETA MLX is a high-end multi-purpose research grade imaging system, ideal for molecular biology core facility. It consists of a superior 16 bit, 9.1 megapixel Peltier cooled camera element, software-controlled lens, eight-position motorized filter wheel come with a high transparent amber filter. Large visual area, MC 200 LED light set covers the wavelength range from visible to NIR as Epi-light source, low background 302nm/365nm dual wavelength UV transilluminator. Inbuilt 24V power supply for blue/white light sample tray, UV radiation safety interlock darkroom, 67mm WK 201 ~ WK 205 filter emission filter as standard, energy saving mode provides camera turn off automatically while idling over than 15 minutes. Pre-set optimum condition, method create and edit capability.

KETA MLX inbuilt with SBC and 12" touch panel LCD, exactly the smart software-controlled imaging system. It's not only available for traditional gel documentation but also equipped with Stain-Free gel UV activation capability. The high S/N of 9.1 megapixel large chip size, Peltier cooled camera with temperature down to 40°C below ambient makes MLX the most sensitive and high resolution system in the market.

Code recognizer enables MLX automatically recognize sample tray to drive the system with the specific emission filter, excitation light source, zoom, iris, focus and all preset parameter to get the best image by one click. The system also supports method create and recall for multiple users.



Two-fold dilution series of purified human transferrin from 625 pg to 2.4 pg

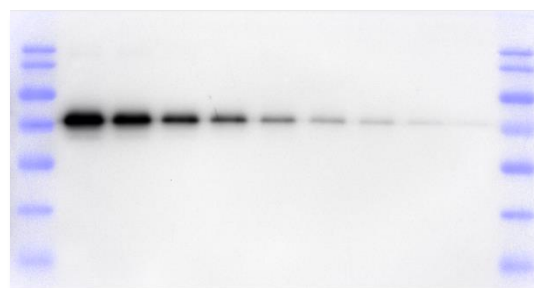


Image blending with the marker image with Auto Coloring

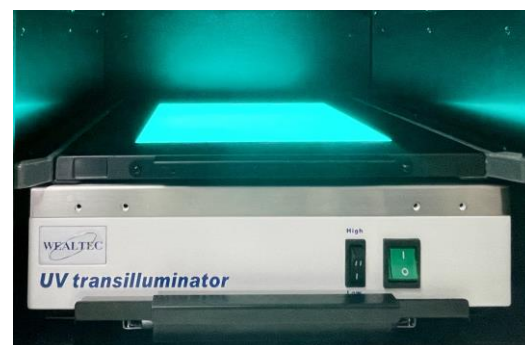
MC 200 is the new LED Epi light source module for fluorescence western blot workflow. It covers wavelength from visible range 460nm to NIR 780nm, coupled with narrow band emission filter delivering excellent result with all kinds of commercial fluorescent dyes.

Magic Chemi Plus software package is dedicated for KETA MLX which integrated with both Magic 1D and Magic Chemi software.

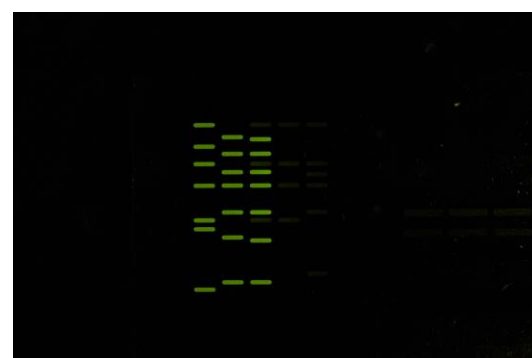
Magic 1D software package with genius capture mode CGM allows user to preset, save and recall capture parameter by one click. Maximum 30 seconds exposure time is available for single capture. The GCM function helps operator to get excellent image anytime.

Built-in darkroom calibration, camera shading correction, distortion correction, flat frame correction, adjustable brightness / contrast /, image profiling / blending, background defining, provides whole visual area imaging at the same level. In addition, four analysis functions, molecular weight and mass determination, colony counting, microtiter plate assay, and spot density calculation are also included.

Magic Chemi software package dedicated for chemiluminescent signal capture, functions include live / preview viewing, auto capture / auto quant capture / professional capture mode. DynaView, Batch Capture and Programming capture are included in Professional mode. DynaView is continuously accumulate signal emitted from the membrane and display with time sequence. Batch Capture function is to simulate the X-ray film exposure protocols to provide continuous image capture with different exposure time. Programming capture detects the signal with 10 sets of exposure time with pause function. Circle select interested region and recapture to get better result. Binning function with 1x1, 2x2, 4x4, and 8x8 augment the sensitivity. Interrupt warning stop and warn the user while capturing been disturbed. Auto-save function allows user to export with most common file formats such as PCX, TGA, DFN, PNG, IMG, TIFF, BMP, JPG, GIF, etc. at once. Molecular Weight and Mass Determination, and Spot Density calculation are included.



Blue/white light sample Tray

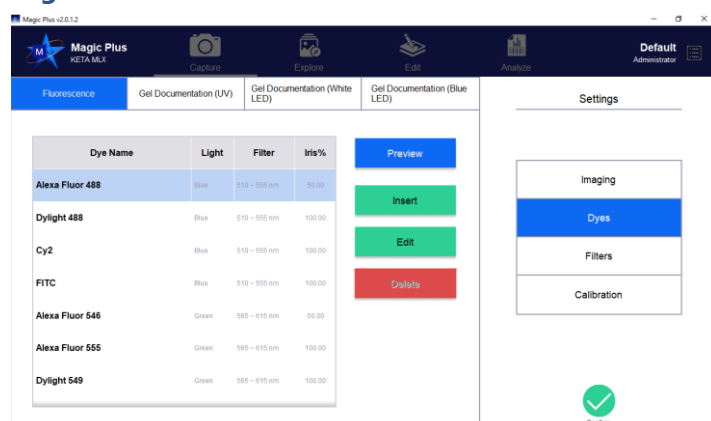


Fluorescence image Alexa Fluor 488



Fluorescent image Alex Fluor 680

Magic Plus software



Select specific dye

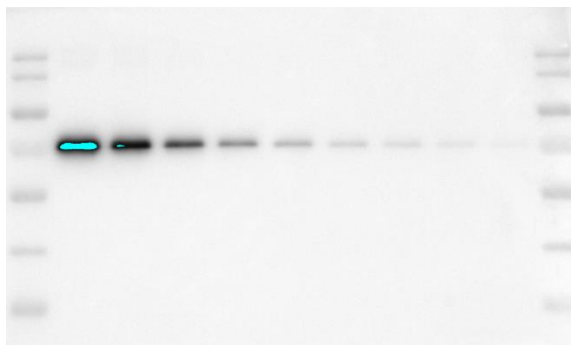


Compare images

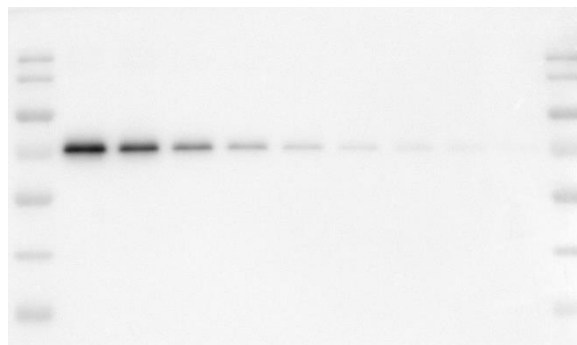
Auto capture mode

Select the Auto Capture mode system automatic predict the optimal exposure time get perfect result both save time and never lost

Any signal, Auto Quant mode same as above the image capture will stop at anyone pixel saturated help operator fast for quantification of protein.



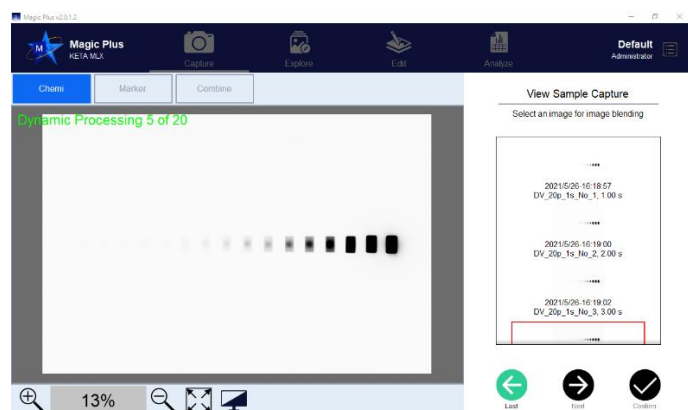
Auto Capture



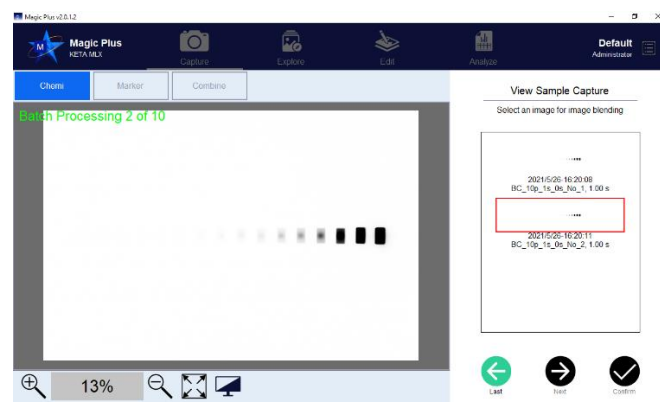
Auto Quant Capture

Professional mode

DynaView and Batch capture for signal cumulate and X-ray film simulation



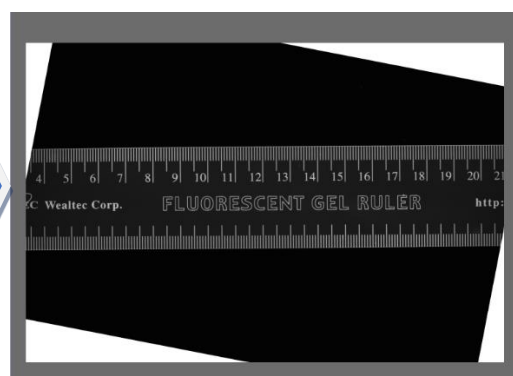
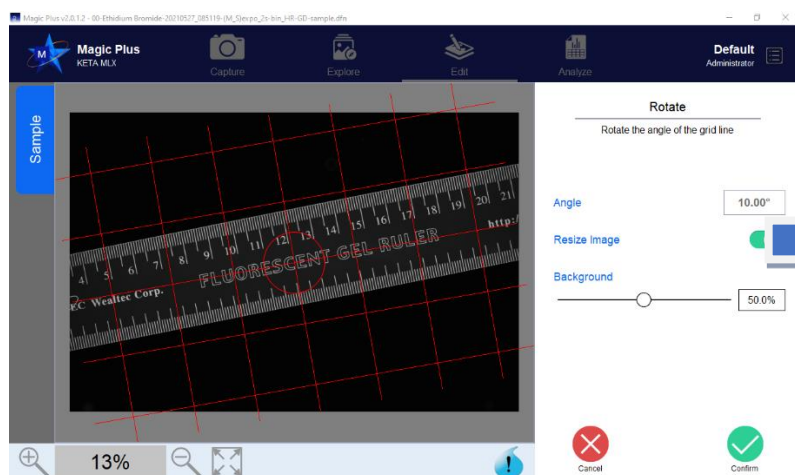
DynaView



Batch Capture

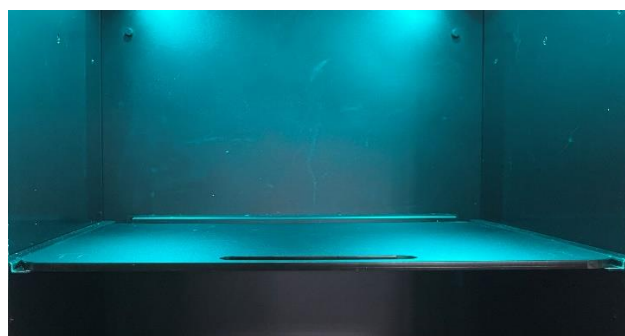
Image rotation

Non-mechanical image rotation capability 0-360 degree enables user to optimize the image with the desired position for professional report export



MC 200 supports versatile fluorescent western blot

MC 200 Epi light set includes eight pieces of Hi- power LED covering wavelength from 460nm to NIR (780nm) for all fluorescent dye excitation on western blot application. Operator choose either the dye or the excitation wavelength, the MLX will automatically turn on the LED and drive the Emission filter to correct position by preset program without additional steps.



MC 200 blue light for Alexa Fluor 488 dye

Motorized Filter Wheel

Software controlled eight 67mm filter position motorized filter wheel remains flexibility for chemiluminescent Imaging and adapted various emission filters for fluorescent western blot Imaging



Eight position filter wheel

Image Analysis Function

Magic Plus software provides powerful tool for user easily compare their images with previous images, enhance the images with the editing tools, and select the best images for quantification analysis

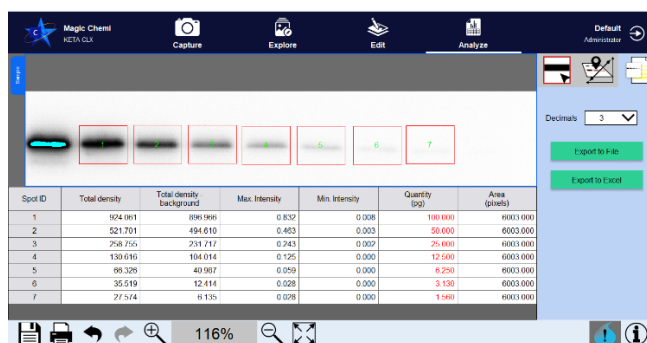
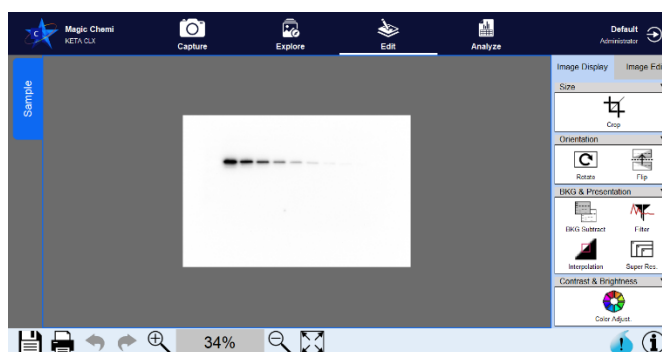


Image Edit and Display

Magic plus possess the traceable image enhancement functions which include: color/ brightness/ contrast adjustment, image profiling or blending, background defining, annotations on the image or masked layer, 3D color display, X-axis comparison, smiling gels correction, conversion, interpolate, Deconvolution, Super Resolution, flipping, rotation and distance measurement.



A

Professional Reporting

Institute: Wealtec Bioscience Co., Ltd.
Laboratory: Research and Development

Creator:
Print date: 2020/12/23 14:39:12

Institute: Wealtec Bioscience Co., Ltd.
Laboratory: Research and Development

Creator:
Print date: 2021/01/29 10:12:18

WEALTEC KETA CLX Chemiluminescent Imaging System


Imaging System Information

System	KETA CLX	Software	Magic Chemi
Serial Number	WC2012L03C2.1	Software Version	2.0.0.4

Image Information

File Name	Normal-Auto(1)-20201222.tif
Image Depth	16-bit
Pixel Count	521,381
Image Display	Inverted
Image Size (pixel)	1477 x 353
Capture Method	Auto Exposure
Binning	Normal
Exposure Time	62.640 sec
File Location	C:\Users\jym\Desktop\Demo Archive\RD Good WB62.Spg_X300.tif

Image Name: Normal-Auto(1)-20201222



Area Density Analysis Report

Spot ID	Total density	Total density - background	Max. Intensity	Min. Intensity	Quantity (%)	Area (pixels)
1	1675.408	1574.752	0.861	0.019	100.000	9306
2	911.559	810.853	0.335	0.012	54.405	9306
3	428.458	327.844	0.146	0.006	25.573	9306
4	224.216	124.230	0.071	0.004	13.383	9306
5	158.724	60.447	0.048	0.004	9.474	9306
6	117.592	23.057	0.154	0.003	7.019	9306
7	92.648	5.494	0.021	0.001	5.530	9306

Specification

Model	KETA MLX
Camera depth	16bit
Dynamic Range	>4.0
Operation temperature	0-60°C
Chip size	1"
Resolution	9.1M pixels
communication	Wi-Fi, Ethernet, USB
Binning	1X1,2X2, 4X4, 8X8
Pixel Size	2.4um x 2.4um
Cooling	Peltier, 40°C below ambient
Motorized Lens	F2.0, 24-65mm focal length
Filter Wheel	67mm, eight-position
Internal light source	MC 200 / 460 nm to NIR 780nm
UV-transilluminator	MD-25DK 302nm/365nm
Tans-light Sample Tray	ST-BW20 Blue & White light, 20 x20cm
Sample Tray	White / Black, 25 x 25cm
Magic plus software	Standard
OS system	MS Windows 10
Physical dimensions	425 x 480 x 865 mm (WxDxH)
Weight	30kg
Power	100 – 240V, 50 – 60Hz, 300W
Optional	
External Touch Screen	20" LCD Screen with touch panel
Thermal printer	Digital
Laser printer	Color Laser Printer

Filter Selection Guide

Filter Type	Em (nm)	Commercial fluorescence dye
WK 201	540-630	Coomassie Blue, EtBr, SYBR Green, SYBR Gold, SYPRO Ruby, SYPRO Orange
WK 202	515-531	Alexa Fluor 488, Alexa Fluor Plus 488
WK 203	564-618	Alexa Fluor 546, Alexa Fluor Plus 555
WK 204	675-719	Alexa Fluor 647, Alexa Fluor Plus 647
WK 205	706-727	Alexa Fluor 680, Alexa Fluor Plus 680
WK 206	800-850	Alexa Fluor 790, Alexa Fluor Plus 800
WK 207	810-850	Alexa Fluor Plus 800 for near IR-excitable fluorophores and stains

Ordering Information

Catalog Number	Description
1150041	KETA MLX complete include main body with 12.1" LED touch screen, SBC with 1TB SSD, Wi-Fi, 5 USB port, Ethernet, Win 10, WK 201~205 filter one each, one each white and black sample tray for membrane, coded blue ST-BW20 blue/white light sample tray, 302nm/365nm dual-wavelength UV transilluminator, built in 24V power for coded trans-light sample tray, a set of keyboard and mouse, 100-240V, 50/60Hz
1153008	Magic PLUS for KETA M series, single user only
1151306	ST-BW20 Coded White light / Blue light 495nm sample tray 20 x 20 cm
1151307	ST-BB20 Coded Green light / Blue light 495/470 nm sample tray 20 x 20 cm
1151308	ST-RW Coded Red light sample tray 20 x 20 cm
1151304	Coded Black sample tray, 25 x 25cm
1151305	Coded White sample tray, 25 x 25cm
1151211	WK 201 540-630 nm H-T Filter perform protein and DNA gel and blot imaging ,67mm
1151212	WK 202 515-531 nm Filter for Alexa Fluor 488, Alexa Fluor Plus 488, 67mm
1151213	WK 203 564-618nm Filter for Alexa Fluor 546, Alexa Fluor Plus 555, 67mm
1151214	WK 204 675-719nm Filter for Alexa Fluor 647, Alexa Fluor Plus 647, ,67mm
1151215	WK 205 706-727nm Filter for Alexa Fluor 680, Alexa Fluor Plus 680, 67mm
1151216	WK 206 800-850nm Filter for Alexa Fluor 790, Alexa Fluor Plus 800, 67mm
1151217	WK 207 810-850nm Filter for Alexa Fluor Plus 800 ,67mm
1146002	UV radiation block cover for gel excision
1151251	MD-25K UV transilluminator, 120V, 60 Hz, 302 nm, 25 x 25cm filter size
1151252	MD-25K UV transilluminator, 230V, 50 Hz, 302 nm, 25 x 25cm filter size
1151259	MD-25DK Dual wavelength UV transilluminator, 100-240V/ 50-60 Hz, 302 /365nm, 25 x 25cm filter size
1155032	External 20" LCD with touch panel
Option	
1146003	Digital thermal printer
1147007	Thermal paper 5 rolls/pack
1147008	Color laser printer

Wealtec Corp.

1885 Meadowvale Way,
Sparks, NV 89431, USA

Tel: +1-775-351-2066 Fax: +1-775-351-2077

E-Mail: sales@wealtec.com

Wealtec Bioscience Co., Ltd.

27F., No.29-1, Sec. 2, Zhongzheng E. Rd.,
Danshui Dist., New Taipei City 251, Taiwan

Tel: +886-2-8809-8587 Fax: +886-2-8809-8589

Web-site: <http://www.wealtec.com>

