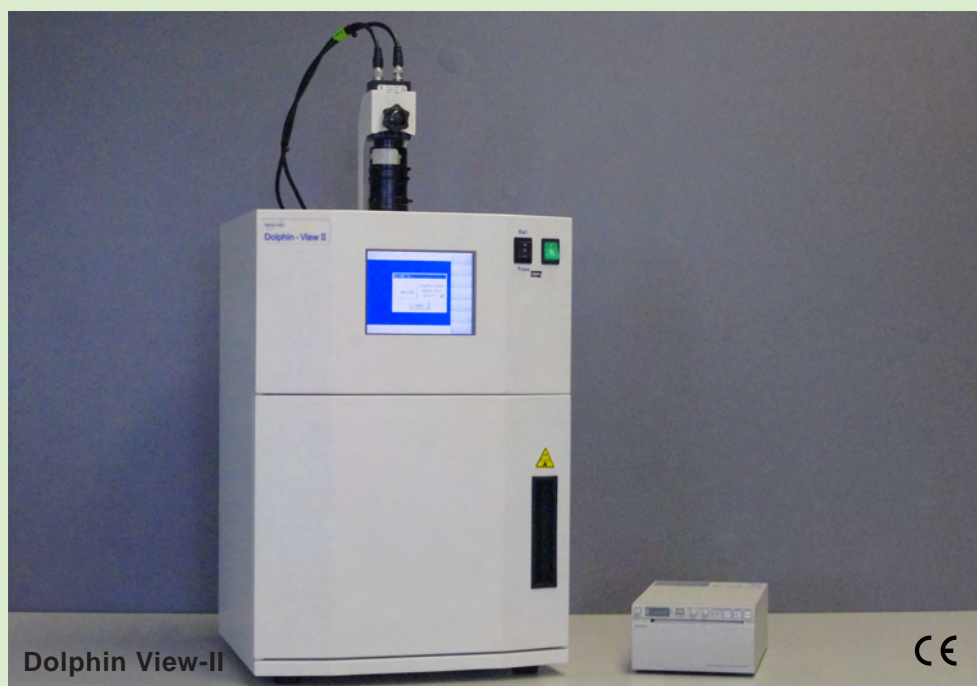


Stand alone gel documentation



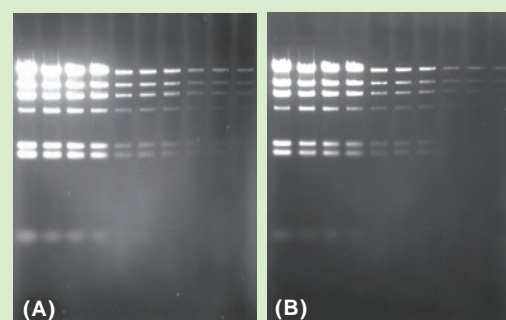
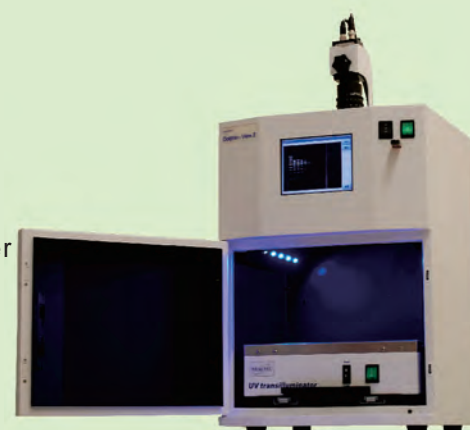
Dolphin-View II is a stand-alone image system specially for routine gel documentation purpose, equipped with B/W CCD camera with manual adjustment lens, built-in firmware, compact darkroom, large LED back light LCD display, touch screen panel, USB port, multiple languages interface, Epi-White light LED, and 312 nm UV transilluminator allows to capture various images like X-ray film, SDS-PAGE and Agarose gel stained by EtBr, SYBR Green, SYBR Orange, SYPR Gold, Coomassie Blue, and silver stain. Band tool analysis software is incorporated with the system as standard.

Features

- Quick place and catch image for all kinds sample
- Low cost high performance system
- Maintenance free design
- Simple operation user interface
- Firmware upgrade and image storage by USB memory sticker
- Band tool analysis software included
- Upgradable Epi-B/G/W and Epi-UV/W LED light

Applications

- Drug discovery, Biotechnology company
- Education, university, academic and research institute
- Analytical chemistry, colorimetric laboratory
- Enzyme reaction, immunology
- Proteomics, genomics core facility
- Food industrial and inspection laboratory



SYBR Gold Excitation By
(A)UV-Transilluminator & (B) Epi-Blue LED

Specifications

CCD depth	8 bit
Chip size	1 / 2 " Interline-Transfer Super HAD CCD*
Pixel resolution	EIA-768(H) x 494(V); CCIR: 752(H) x 582(V)
S/N ratio	56 dB
Lens	Manual adjust 8-48 mm f1.2
Filter	Close-up lens and amber filter
Illumination	Epi-White Light LED
UV transilluminator	312 nm, 6 x 8 Watt tubes, 250 x 250 mm filter size
Full-open door	Yes
Slide-out frame	Yes
Door safety Interlock	Yes
UV light safety switch	Yes
Power	230/120/100 V, 50-60 Hz
Control & display	Touch Screen TFT LCD Monitor
Image file format	TIFF
Image storage	USB memory stick
Physical dimensions (mm)	450 x 390 x 570 (W x D x H)
PC analysis software	Dolphin-View Band Tool Analysis Software
Weight (kg)	44
Operating environment	Temp: 0-40°C, Humidity: 10-90% R.H. Non-condensing
Optional	
Thermal printer	Analog thermal printer
Converter plate	UV/White light converter plate
Software	Dolphin-1D analysis software
Illumination	Epi-Blue/Green/White LED Light; Epi-UV/White LED Light

The spec is subject to change without prior notice. *Super HAD CCD is registered trademark of Sony Corporation.

Ordering Information

Catalog No.	Description
1147011	Dolphin-View II Image System/USB ,120V/60Hz, includes CCD camera, manual adjust lens, darkroom with Epi-White LED light, 2+ closed up, EtBr filter, MD-25 UV- transilluminator (25 x 25cm), Dolphin-View Band Tool software.
1147012	Dolphin-View II Image System/USB, 230V/50Hz, includes CCD camera, manual adjust lens, darkroom with Epi-White LED light, 2+ closed up, EtBr filter, MD-25 UV- transilluminator (25 x 25cm), Dolphin-View Band Tool software.
1147013	Dolphin-View II Image System/USB,100V/50Hz, includes CCD camera, manual adjust lens, darkroom with Epi-White LED light, 2+ closed up, EtBr filter, MD-25 UV- transilluminator (25 x 25cm), Dolphin-View Band Tool software.
1147014	Dolphin-View II Image System/USB, 100V/60Hz, includes CCD camera, manual adjust lens, darkroom with Epi-White LED light, 2+ closed up, EtBr filter, MD-25 UV- transilluminator (25 x 25cm), Dolphin-View Band Tool software.
Accessories	
1144001	Dolphin-1D software
1144012	Dolphin-1D software instead of standard Band Tool software
1146001	UV/White light converter plate
1146002	Protection cover for gel excision
1146012	Epi-Blue/Green/White LED light instead of standard LED white light (factory install)
1146013	Epi-White light /UV light Module instead of standard LED white light (factory install)
1147005*	Analog thermal Printer for Dolphin-View/ Dolphin-View II Image system
1147007*	High Glossy Thermal Paper, 240 prints/roll, 5 rolls/box
8100027	High transparent amber filter



Wealtec Corp.
1885 Meadowvale Way,
Sparks, NV 89431, USA
Tel: +1-775-351-2066 Fax: +1-775-351-2077

Wealtec Bioscience Co., Ltd.
27F., No.29-1, Sec. 2, Zhongzheng E. Rd., Danshui Dist.,
New Taipei City 251, Taiwan
Tel: +886-2-8809-8587 Fax: +886-2-8809-8589

