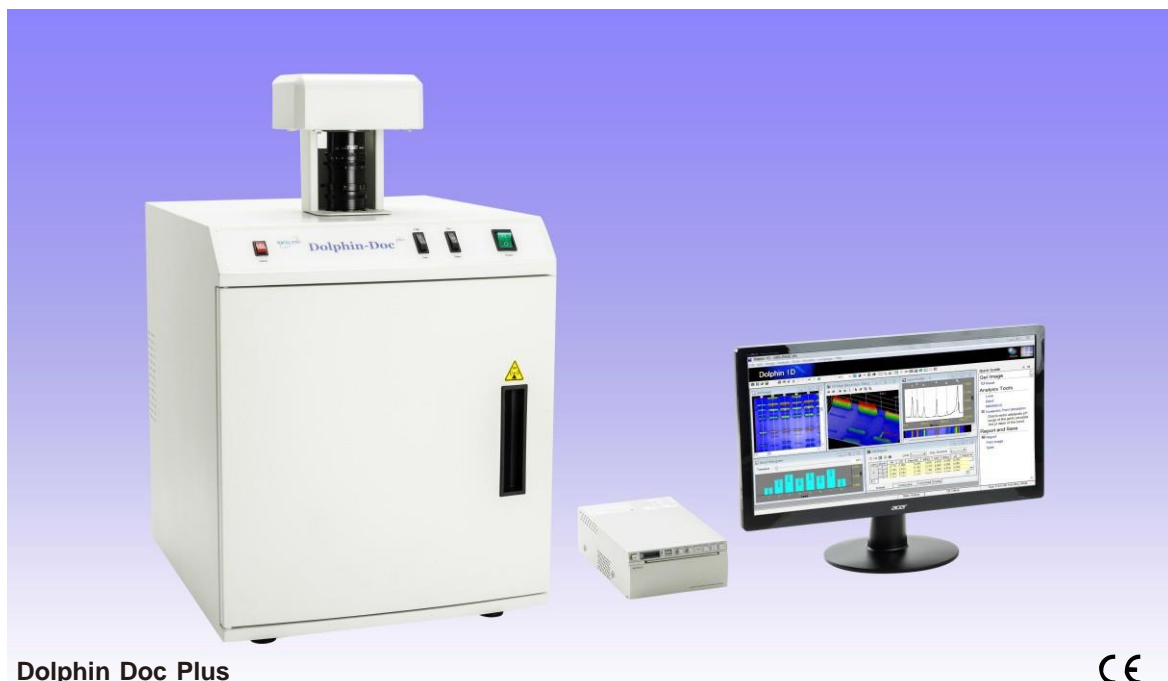


Gel Documentation System

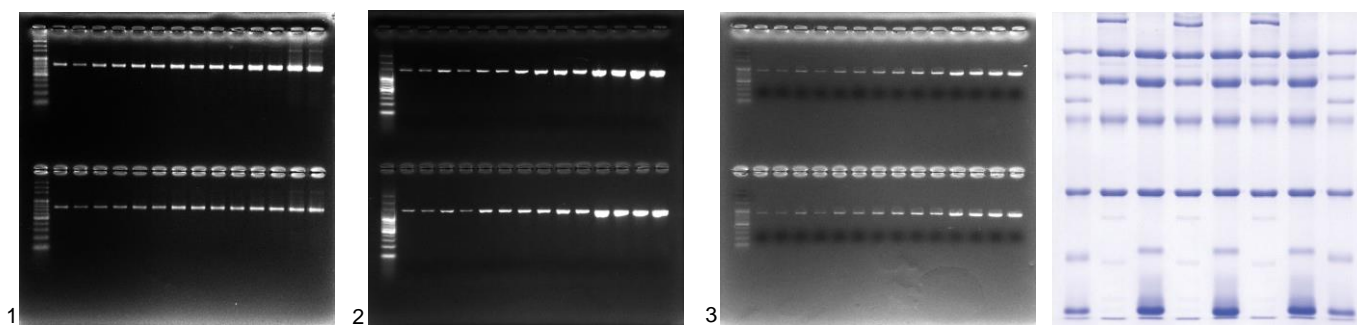


Dolphin Doc Plus



A new milestone in gel documentation market, comprises with darkroom, room temperature 16 bit digital B/W camera, manual adjustment lens, Epi-White light and 302nm UV transilluminator allows to capture various images such as X-ray film or SDS-PAGE and agarose gel stained by EtBr, SYBR Green, SYPRO Orange, SYBR Gold, Coomassie Brilliant Blue, and silver stain. 24V power supply in built as standard for BW-20 blue/white light transilluminator.

1D software package is the standard of the Dolphin Doc plus system, the main function includes concisely image capturing interface, 3D image profile display, image blending and labeling, operation quick guide, 8-16 bits pixel depth simulation, step-by-step motion tracking, precisely lane and band profile output aligns with lane image. Colony Petri dish, blotting membrane, microtiter plate as well as colorimetric assay all included.



SYBR Dyes stained DNA agarose gel by BW-20 : 1. SYBR Green 2. SYBR Gold 3. SYBR Safe

Coomassie Brilliant Blue stained SDS-PAGE

Features

- Compatible image file formats: JPG, BMP, JPEG, DFN, TIFF, PCX, GIF and TGA
- Adjustable intensity 302nm UV transilluminator for both gel analysis and excision
- Optional 150mm x 40mm anti-UV radiation observation window
- Small footprint suitable for frequently used gel documentation
- Operation quick guide and one-click auto data process
- Low cost high performance gel documentation system

Applications

- Education, university, academic and research institute
- Analytical chemistry, molecular laboratory
- Food industrial and inspection laboratory
- Drug discovery, Biotechnology company
- Proteomics, genomics core facility
- Enzyme reaction, immunology

Specification

Camera depth	B/W 16 bit
Chip size	2/3"
Resolution	5.0M pixels
Cooling	Air, R-T
Operating temperature	0 - 60°C
Lens	f1.4, 11.5 - 69 mm (6x) manual adjustment
Filter	HT-Amber filter and 2X close-up lens
Epi light source	U10 LED
UV transilluminator	302nm, 25 x 25cm working area
Full-open door	Yes
Slide-out frame	Yes
UV radiation safety Interlock	Yes
UV light safety switch	Yes
Software	Dolphin-1D analysis software or Band Tool software
Physical dimensions	420 x 460 x 680 mm (W x D x H)
Power	100 - 240V, 50-60Hz, 120W
Weight	35 kg
Certification	CE
Optional	
Thermal printer	Digital thermal printer / laser / Inkjet printer
Converter plate	UV/White light converter plate or BW-20
UV radiation block cover	Gel excision, visualization

The specification is subject to change without prior notice.

Ordering Information

Catalog No.	Description
1141004	Dolphin-Doc Plus Gel Image system, complete included 16bit 5.0M pixels camera, lens, MD-25K 302nm UV-transilluminator, Epi white light, high transparent amber filter, Dolphin-1D software, PC excluded, 100-240V/50-60Hz
1141005	Dolphin-Doc Junior Gel Image system, complete included 16bit 5.0M pixels camera, lens, MD-25K 302nm UV-transilluminator, Epi white light, high transparent amber filter, Band Tool software, PC excluded, 100-240V/50-60Hz
1144001	Dolphin-1D software
1146001	UV / White light converter plate
1146002	UV radiation block cover for gel excision
1146003	Digital thermal printer
1146021	BW-20 B&W light transilluminator, 20 x 20cm with power adaptor and orange cover, 100-240V, 50-60Hz
1147101	Band Tool Software
1147113	High transparent SYBR Green filter 49mm ID
1155501	PC: Intel® Core™ i3-3240 3.4GHz, 1 G RAM, English version Windows 10 OS, 4 x USB.
8100027	High transparent amber filter 49mm ID
8106041	HD-25K 365nm UV transilluminator, 100-240V, 50-60Hz 25 x 25cm filter size in lieu of standard MD-25K
8106042	MD-25KD 302/365nm UV transilluminator, 100-240V, 50-60Hz, 25 x 25cm filter size in lieu of standard MD-25K



Wealtec Corp.
1885 Meadowvale Way,
Sparks, NV 89431, USA
Tel: +1 775 351 2066 Fax: +1 775 351 2077

E-Mail: sales@wealtec.com Web-site: <http://www.wealtec.com>

Wealtec Bioscience Co., Ltd.
27F., No.29 1, Sec. 2, Zhongzheng E. Rd., Danshui Dist.,
New Taipei City 251, Taiwan
Tel: +886 2 8809 8587 Fax: +886 2 8809 8589



No. 1208DOC01©2014Wealtec Corp.