

Specifications



Camera	
Sensor size (mm)	8.8 x 6.45
Sensor	2/3"
Pixel size (µm)	6.45 x 6.45
Greyscales	65536 levels
Resolution	1360 x 1024 (~1.4 Mega)
Pixel depth	16 bit
S/N ratio	> 69dB
Dynamic range	4 orders of magnitude
Cooling	Peltier Thermoelectric (TEC) cooler, -30° C below ambient
Lens	0.95/17 mm
Darkroom	
Dimensions (L x W x H)	35.0 x 31.0 x 61.1 cm
Power	120/230 V; 50-60 Hz
Weight (Kg)	20
Image acquisition	USB 2.0
PC analysis software	Dolphin-1D software

Dolphin-Chemi mini

Ordering Information

Item #	Description
1145011	Dolphin-Chemi mini/USB Image System, includes darkroom package with dual position sample stage, 16 bit cooled CCD camera, lens, sample tray/1 pcs, USB2.0 cable/1 set, power cable/1 set, Dolphin-shot/Dolphin-1D software, and power transformer 120V, 50/60Hz. (This item needs for external PC)
1145012	Dolphin-Chemi mini/USB Image System, includes darkroom package with dual position sample stage, 16 bit cooled CCD camera, lens, sample tray/1 pcs, USB2.0 cable/1 set, power cable/1 set, Dolphin-shot/Dolphin-1D software, and power transformer 230V, 50/60Hz. (This item needs for external PC)



Wealtec Corp.

1885 Meadowvale Way
Sparks, NV 89431, U.S.A.
Tel: +1-775-351-2066 Fax: +1-775-351-2077

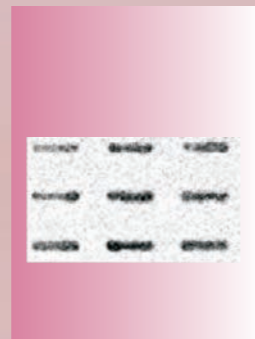
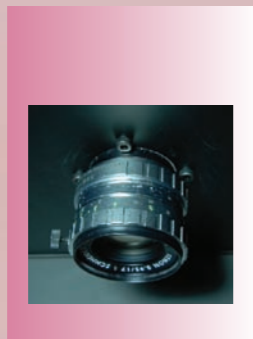
Wealtec Bioscience Co., Ltd.

27FL., No.29-1, Sec 2, Jungieng E.RD.,
Danshuei Jen, Taipei, Taiwan 25170
Tel: +886-2-88098587 Fax: +886-2-88098589

E-Mail: sales@wealtec.com Web-site: <http://www.wealtec.com>

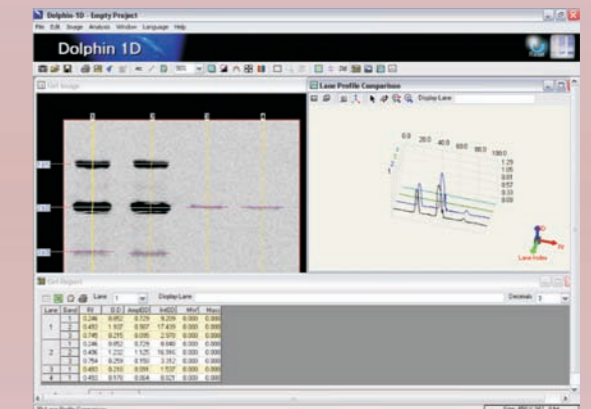
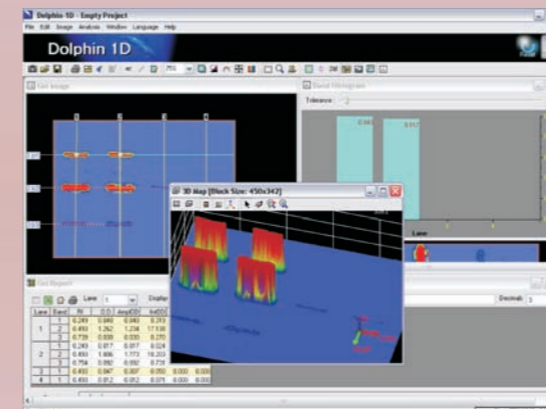
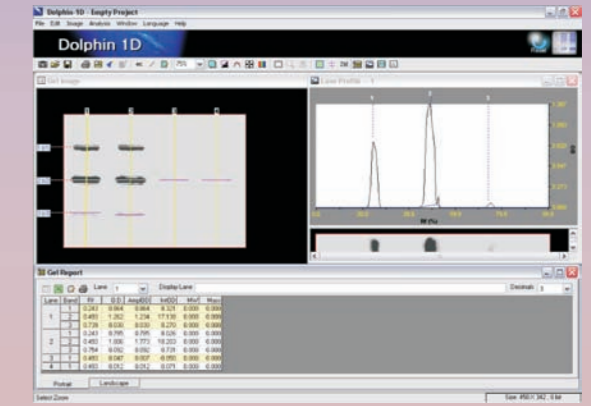
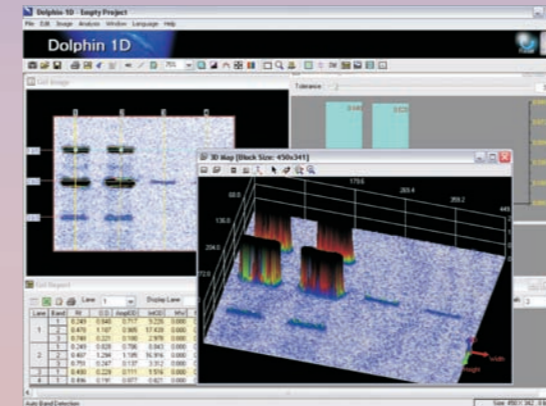
Features

- Small footprint image system designed especially for chemiluminescent imaging
- 16-bit cooled CCD camera enables great sensitivity and eliminates noise
- Convenient image acquisition modes in featured software
- Automatic, incremental or one-shot manual exposure modes
- 10 hours maximum exposure (incremental mode, 10 accumulations)
- No more X-ray film



Dolphin-1D image system software

The system provides simple and easy platform for researchers to acquire and analyze their captured chemiluminescent images. The tool includes functions that can adjust the captured gel image contrast, reverse colors, and also crop images, etc.



Applications

Chemiluminescent imaging of western blots, dot blots, slot blots, microtiter plates

- ECL and ECL+™*
- SuperSignal West™*
- Luminol- CDP Star™*
- Horseradish Peroxidase
- Alkaline Phosphatase

* ECL and ECL+ are registered trademarks of Amersham Biosciences, Inc. SuperSignal West is a registered trademark of Pierce Biotechnology, Inc., CDP Star is a registered trademark of Tropix, Inc.