

Densitometer



Dolphin-Scan is a professional Scanner for 2-D Gel, SDS-PAGE, Western Blot , X-ray film serving for high resolution image catch. Both transparence and reflectance mode are applicable for whether the samples are dry or wet.

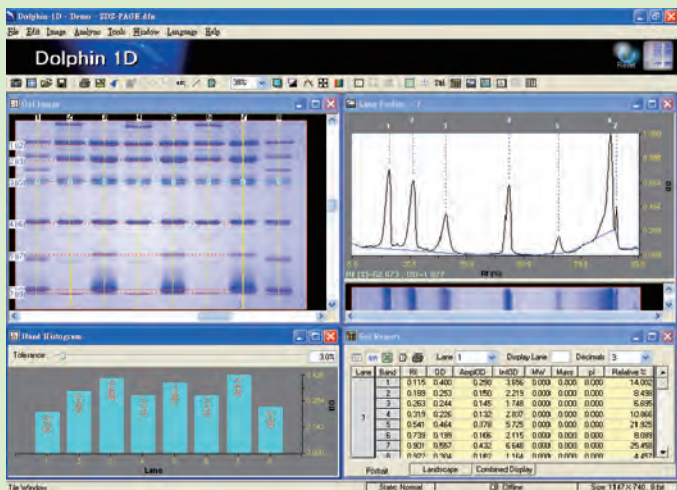
Features

- Removeable waterproof glass holder for easy cleaing
- Deliver the accurate images of gel sample
- Make batch scanning easily
- Gel cassette
- 1-D software available

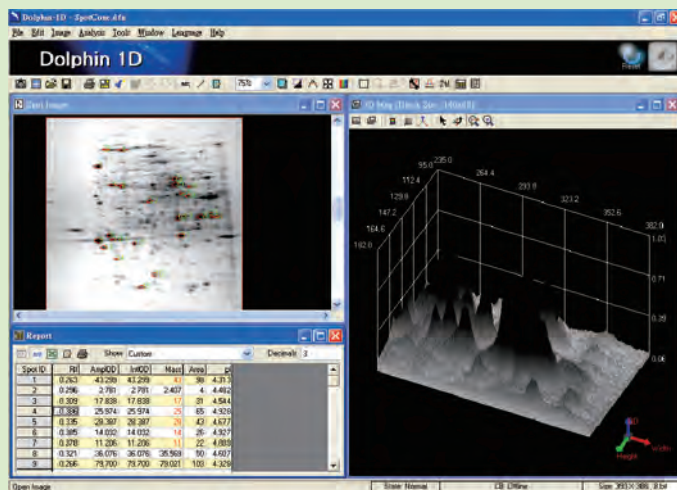
Applications

- Drug discovery, Biotechnology company
- Education, university, academic and research insti|te
- Analytical chemistry, colorimetric laboratory
- Enzyme reaction, immunology
- Proteomics, genomics core facility
- Food industrial and inspection laboratory

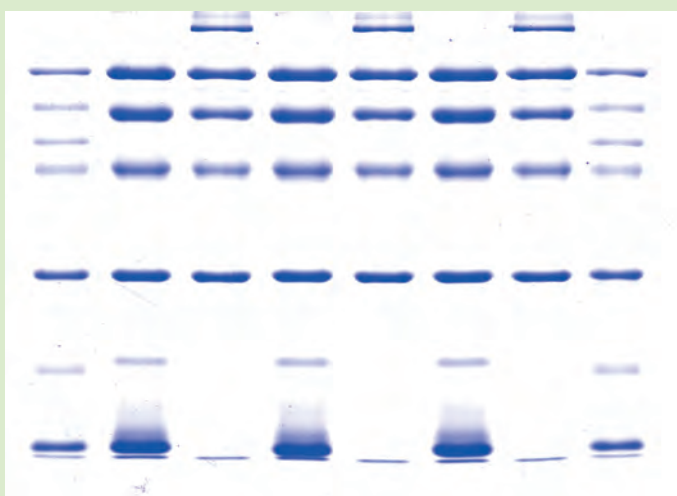




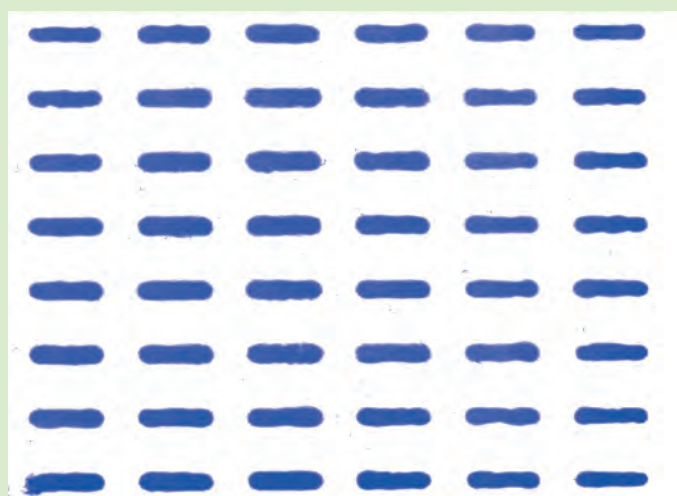
MW/Mass Determination



Spot Density Calculation



Positive film scan of SDS-PAGE with 1000 dpi



Reflective scan of PVDF with 1000 dpi

Specifications

Product type	Flatbed scanner
Detector	Linear CCD
Optical resolution	4800 x 9600 dpi
OD range	0.01-3.4 OD
Scan area	Reflective: 216 x 356 mm; Transparent: 195 x 246 mm
Bit depth	True 48-bit
Interface	USB 2.0
Power	100-240VAC, 50-60 Hz, 35 Watt
Analysis software	Dolphin-1D software
Physical dimension (mm)	358 x 567 x 158 (W x D x H)
Weight (kg)	13

Ordering Information

Catalog No.	Description
1143001	Dolphin-Scan Image system, 100-240V/ 50-60Hz includes scanner, Dolphin-1D software