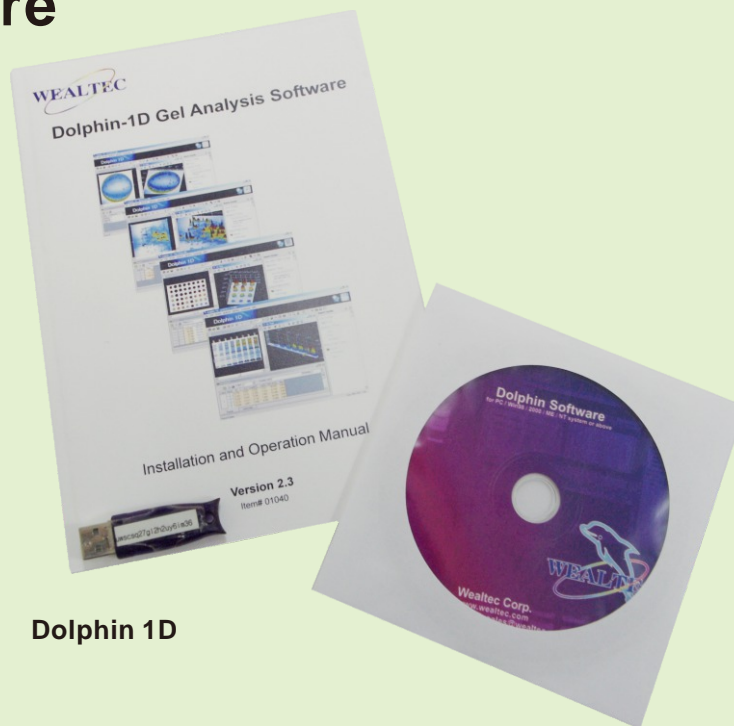


1D Software



Dolphin 1D

Dolphin 1D Software provides operator easy to use advantage for daily use molecular biology laboratory. Dolphin 1D software has powerful functions for 1-D gel MW/ Mass determination, colony counting, microtiter plate analysis, and spot density calculation. 1 D software is traceable in image enhancement. The main functions include automatic data analysis, lane profile aligns with lane image, Intelligent colony counting, comprehensive microtiter plate analysis, accurate spot density calculation, accurate identification ability of smiling gel, specialized X-axis bands analysis function, and image profile & 3-D display. GLP/GMP version is also available now.

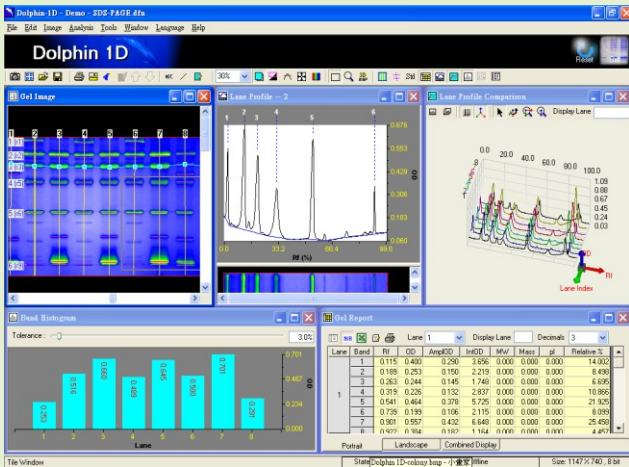
Dolphin-1 D software can be operated and connected with all Dolphin series imager as well as standalone imager.

Features

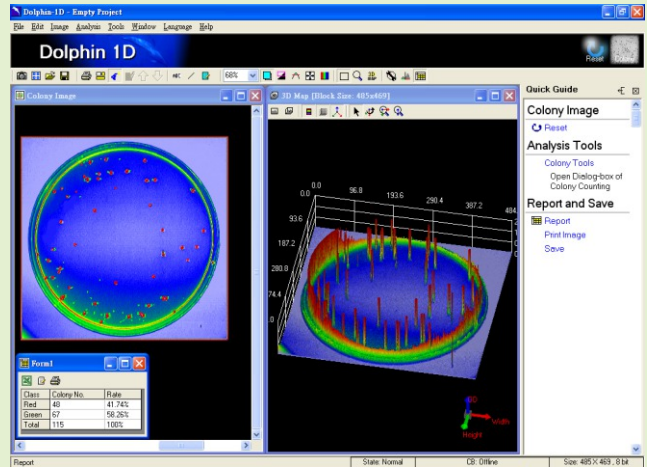
- JPG, BMP, JPEG, DFN, TIFF, PCX, GIF, TGA format compatible
- Automatic data analysis within a second
- Traceable image enhancement function
- Lane profile aligns with lane image
- Intelligent colony counting
- Comprehensive microtiter plate analysis
- Spot density calculation
- Identification ability of smiling gel
- Specialized X-axis bands analysis function
- Image profile & 3-D display

Applications

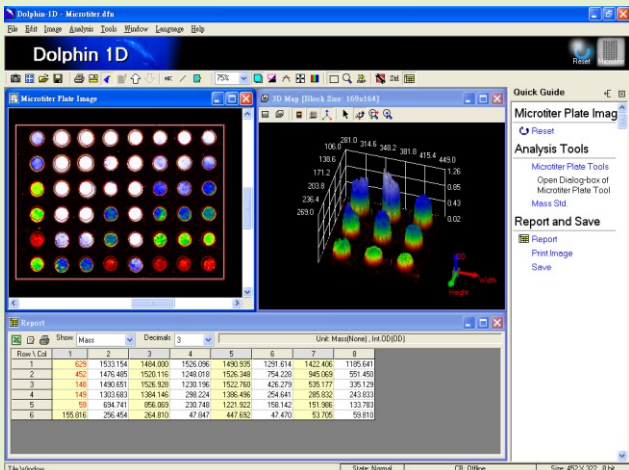
- Drug discovery, Biotechnology company
- Education, university, academic and research institute
- Analytical chemistry, colorimetric laboratory
- Enzyme reaction, immunology
- Proteomics, genomics core facility
- Food industrial and inspection laboratory



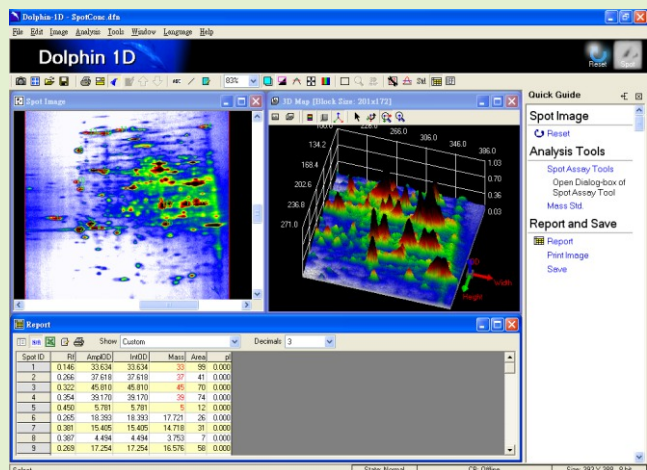
MW/Mass Determination



Colony Counting



Microtiter Plate Imaging



Spot Density Calculation

Ordering Information

Catalog No.	Description
1144001	Dolphin-1D software
1144012	Dolphin-1D software instead of standard Band Tool software



Wealtec Corp.
1885 Meadowvale Way,
Sparks, NV 89431, USA
Tel: +1-775-351-2066 Fax: +1-775-351-2077

Wealtec Bioscience Co., Ltd.
27F., No.29-1, Sec. 2, Zhongzheng E. Rd., Danshui Dist.,
New Taipei City 251, Taiwan
Tel: +886-2-8809-8587 Fax: +886-2-8809-8589

E-Mail:sales@wealtec.com Web-site:http://www.wealtec.com

No. 1011DS01©2011Wealtec Corp.

